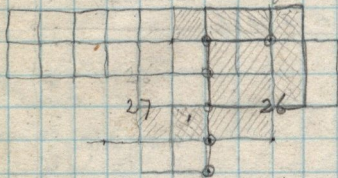


U.S. Patent to Probate Judge of Box Elder County, Utah.

Lot 4, of Sec 22, the S. 1/2 of S. W. 1/4 Sec. 23, the N. 1/2 of S. W. 1/4 and S. W. 1/4 Sec 26. The Lots 1-2-3-4 of the N. E. 1/4 of S. E. 1/4 of Sec 27. in Sp 8-77-R-2-W. containing 582.42 a, being the Townsite of Willard City in the said County of Box Elder,



Wm Parsons

Should be south Wm Parsons

Wm Parsons

OWEN OWEN

15.
19.35
33.37
60.
127.72
25.54

Length of C.P. Curve
68.62 ch = 4529. Ft.
Whole angle 22°-33'
should be 6°30' curve.

John Hubbard
(estate)

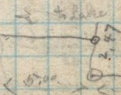
ex sec 34.1 ch = 225.2 ft

Subtang 2284.6 ft = 34.61 ch

to Lake Edwards N. line
18.00

Edwards

Shore of Lake



J.L. Ed